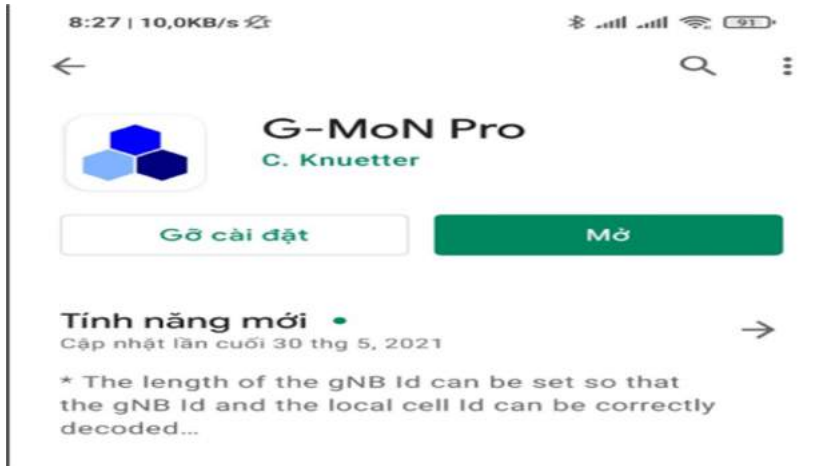


PHẦN MỀM G-MON PRO

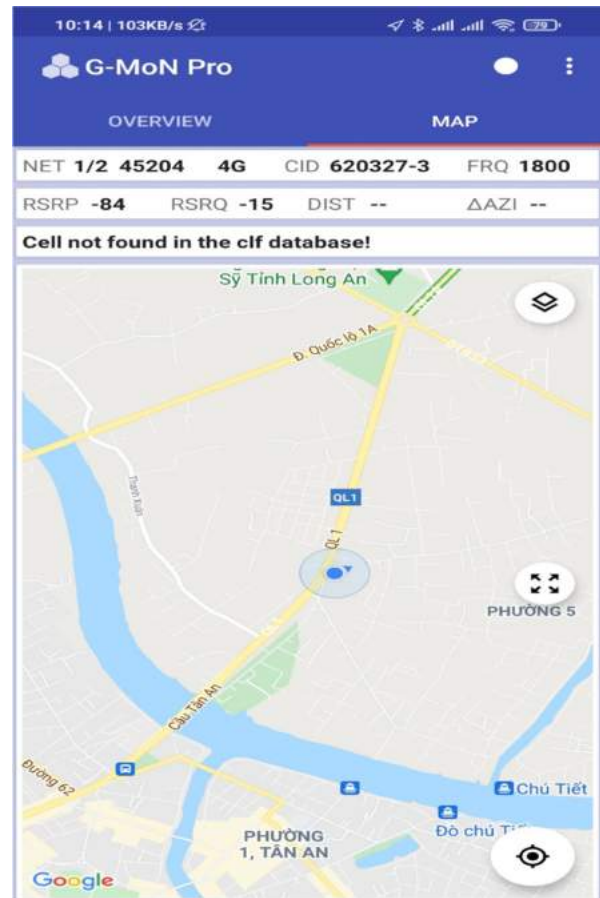
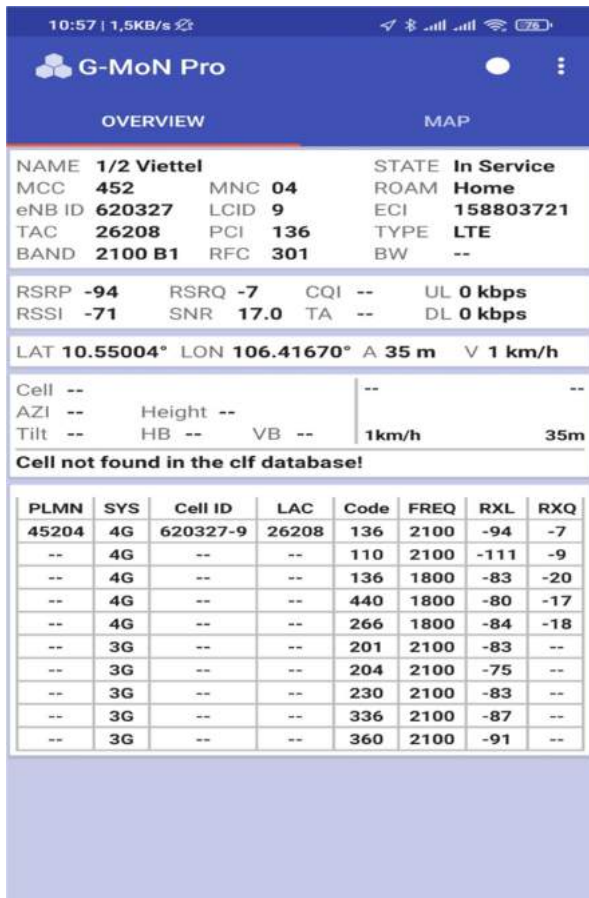


Link cài đặt (android) :



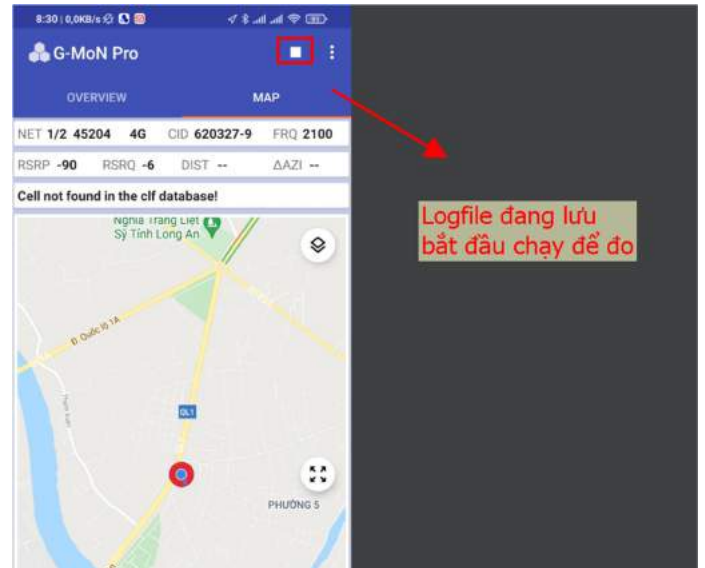
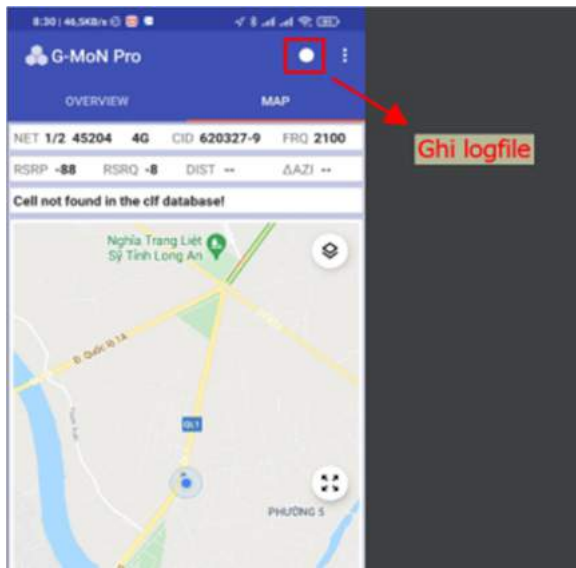
Vào CHPlay -> G-Mon Pro

1) Giao diện phần mềm:

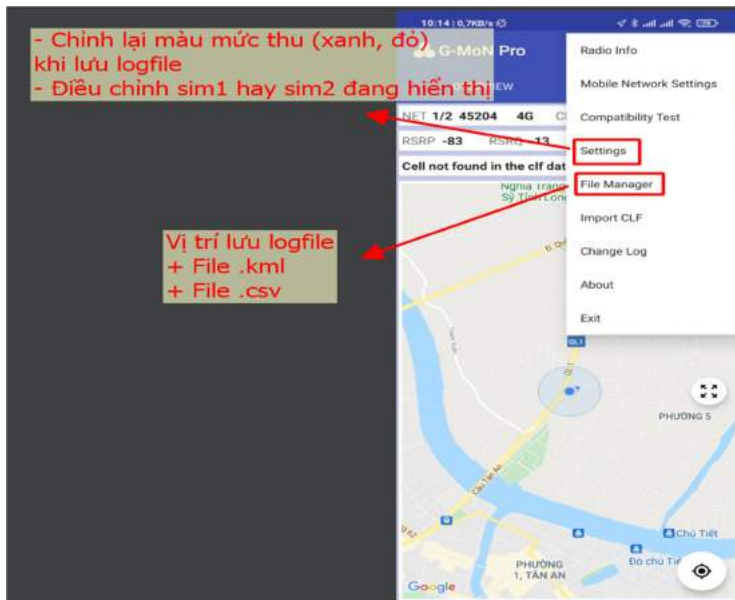


2) Hướng dẫn nhanh:

- Ghi Logfile :



- Chỉnh lại màu mức thu và Vị trí lưu logfile:



NOTE:

- 1) Dùng 1 máy 2 sim 1 nhà mạng: 1sim 2G, 1sim 4G để đo Viettel
- 2) Dùng 2 máy 2 nhà mạng: 1 sim Mobi, 1 sim Vina...

➤ SETTINGS

+ Chọn chế độ hiển thị là sim đang đo (sim1 or sim2) :

Settings -> General -> Sim card for Overview tab

+ Chỉnh lại màu (mức thu) khi đo logfile (điều chỉnh trước khi bắt đầu đo):

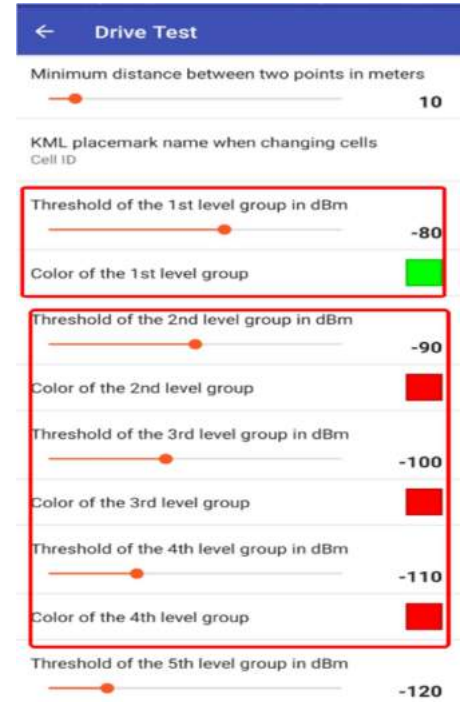
Settings -> Drive test

Chỉnh màu theo từng level, mặc định mỗi level sẽ là 1 màu

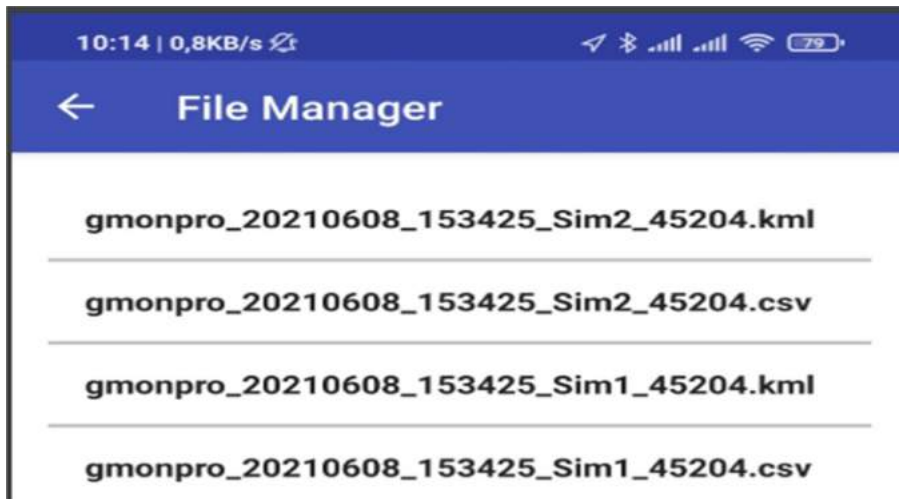
VD: Chỉnh 2 màu (theo hình bên phải)

- màu xanh \geq -80dbm

- màu đỏ \leq -80dbm



➤ FILE MANAGE

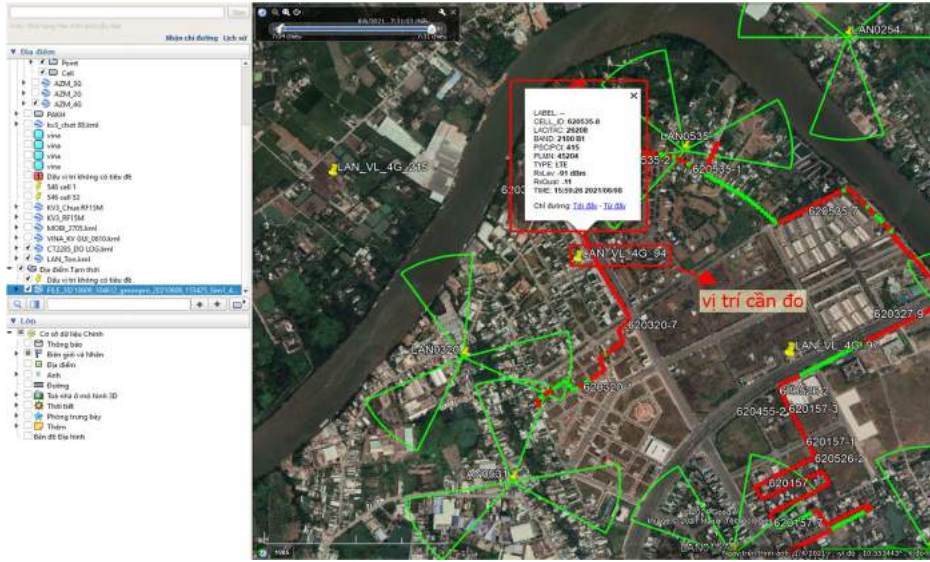


-> Lưu theo sim 1 và sim 2 (xem nhanh trên điện thoại để kiểm tra có logfile không)

Đường dẫn để lấy logfile : `Android\data\de.carknue.gmonpro/files`

-> Có 2file (.kml và .csv)

+ File .kml



+ File .csv

The image shows an Excel spreadsheet with a large table of data. The columns are labeled as follows: RAN, SYSTEM, RCI, ANNO, LOCAL_CI, ACTIVATE, RSRP, RSRQ, BATCH, BAND, KPI, RSRP, RSRQ, DISTANCE, DELTA, LAC, CI, RSRP, RSRQ, GPS_ACC, SMO, VL, DL, BANDW, BANDW, CA, RLS_STAT, RLS_BAN.

Several columns are highlighted with red boxes: ANNO, LOCAL_CI, RSRP, RSRQ, DISTANCE, DELTA, LAC, CI, RSRP, RSRQ.

RAN	SYSTEM	RCI	ANNO	LOCAL_CI	ACTIVATE	RSRP	RSRQ	BATCH	BAND	KPI	RSRP	RSRQ	DISTANCE	DELTA	LAC	CI	RSRP	RSRQ	GPS_ACC	SMO	VL	DL	BANDW	BANDW	CA	RLS_STAT	RLS_BAN
4	455	4	154788000	620320	2	26200	240	1700	2000	81	-51	-88	-13	3	8	18.3707	106.424	8	6	0	0	1	none	1	none		
5	455	4	154788000	620320	2	26200	240	1700	2000	81	-57	-88	-8	3	8	18.3707	106.424	27	5	0	0	1	none	1	none		
6	455	4	154788000	620320	2	26200	240	1700	2000	81	-57	-88	-8	3	8	18.3707	106.424	27	5	0	0	1	none	1	none		
7	455	4	154788000	620320	2	26200	240	1700	2000	81	-57	-88	-8	3	8	18.3707	106.424	27	5	0	0	1	none	1	none		
8	455	4	154788000	620320	2	26200	240	1700	2000	81	-51	-82	-14	3	8	18.3707	106.424	36	3	0	0	1	none	1	none		
9	455	4	154788000	620320	2	26200	240	1700	2000	81	-51	-82	-14	3	8	18.3707	106.424	46	6	0	0	1	none	1	none		
10	455	4	154788000	620320	2	26200	240	1700	2000	81	-51	-82	-14	3	8	18.3707	106.424	46	6	0	0	1	none	1	none		
11	455	4	154788000	620320	2	26200	240	1700	2000	81	-51	-82	-14	3	8	18.3707	106.424	42	4	0	0	1	none	1	none		
12	455	4	154788000	620320	2	26200	240	1700	2000	81	-51	-82	-14	3	8	18.3707	106.424	43	4	0	0	1	none	1	none		
13	455	4	154788000	620320	2	26200	240	1700	2000	81	-51	-82	-14	3	8	18.3707	106.424	45	8	0	0	1	none	1	none		
14	455	4	154788000	620320	2	26200	240	1700	2000	81	-51	-82	-14	3	8	18.3707	106.424	46	6	0	0	1	none	1	none		
15	455	4	154788000	620320	2	26200	240	1700	2000	81	-51	-82	-14	3	8	18.3707	106.424	47	6	0	0	1	none	1	none		
16	455	4	154788000	620320	2	26200	240	1700	2000	81	-51	-82	-14	3	8	18.3707	106.424	45	8	0	0	1	none	1	none		
17	455	4	154788000	620320	2	26200	240	1700	2000	81	-51	-82	-14	3	8	18.3707	106.424	43	4	0	0	1	none	1	none		
18	455	4	154788000	620320	2	26200	240	1700	2000	81	-51	-82	-14	3	8	18.3707	106.424	41	4	0	0	1	none	1	none		
19	455	4	154788000	620320	2	26200	240	1700	2000	81	-51	-82	-14	3	8	18.3707	106.424	42	4	0	0	1	none	1	none		
20	455	4	154788000	620320	2	26200	240	1700	2000	81	-51	-82	-14	3	8	18.3707	106.424	43	4	0	0	1	none	1	none		
21	455	4	154788000	620320	2	26200	240	1700	2000	81	-51	-82	-14	3	8	18.3707	106.424	43	4	0	0	1	none	1	none		
22	455	4	154788000	620320	2	26200	240	1700	2000	81	-51	-82	-14	3	8	18.3707	106.424	43	4	0	0	1	none	1	none		
23	455	4	154788000	620320	2	26200	240	1700	2000	81	-51	-82	-14	3	8	18.3707	106.424	43	4	0	0	1	none	1	none		
24	455	4	154788000	620320	2	26200	240	1700	2000	81	-51	-82	-14	3	8	18.3707	106.424	47	4	0	0	1	none	1	none		
25	455	4	154788000	620320	2	26200	240	1700	2000	81	-51	-82	-14	3	8	18.3707	106.424	49	4	0	0	1	none	1	none		
26	455	4	154788000	620320	2	26200	240	1700	2000	81	-51	-82	-14	3	8	18.3707	106.424	51	4	0	0	1	none	1	none		
27	455	4	154788000	620320	2	26200	240	1700	2000	81	-51	-82	-14	3	8	18.3707	106.424	51	4	0	0	1	none	1	none		
28	455	4	154788000	620320	2	26200	240	1700	2000	81	-51	-82	-14	3	8	18.3707	106.424	51	4	0	0	1	none	1	none		
29	455	4	154788000	620320	2	26200	240	1700	2000	81	-51	-82	-14	3	8	18.3707	106.424	48	6	0	0	1	none	1	none		
30	455	4	154788000	620320	2	26200	240	1700	2000	81	-51	-82	-14	3	8	18.3707	106.424	48	6	0	0	1	none	1	none		

File excel có thông tin: CELL ID, PCI, RSRP,RSRQ, LONG, LAT,.....